



RFUF

RETIRED FACULTY OF THE UNIVERSITY OF FLORIDA, INC.

January 2006

Volume 30, Number 2

Board of Directors 2005–2006

Duane S. Ellifritt
PRESIDENT

Charles Taylor
PRESIDENT ELECT

James R. Saucerman
SECRETARY

TREASURER

M. Jack Ohanian
PAST PRESIDENT

Willis Bodine
Robert F. Lanzillotti

Audrey E. Clark
Richard D. Downie

Joseph Amdur
C. Vernon Shaffer
DIRECTORS

Robert A. Ramey
MEMBERSHIP CHAIR

Madelyn M. Lockhart
NEWSLETTER EDITOR

Virginia Strozier
HOSPITALITY CHAIR

Spring Luncheon

April 5, 2006

Paramount Resort

President's Message

The fall term of the 2005-2006 year of RFUF (a.k.a. Ruff-ruff) got off to a rocky start. First, our Treasurer, Lucia Yu became ill, forcing us to scramble to find an interim Treasurer. Then, our President-elect, Chuck Taylor, had unexpected heart surgery which laid him up for six weeks. Further, two of our Board members left for extended leaves, and we no longer have a permanent coffee chairman.

Sadly, Lucia died in October, and we enlisted George Garrington to be interim Treasurer. Chuck is recuperating and will soon be back with us. Bob Levitt is a new Board member and the Drummonds and Ellifritts are alternating the coffee-making job.

Aside from these setbacks, some of which can be expected with a club of this type, we have had an interesting and diverse group of speakers this fall. We have learned about investing in the stock market, human-animal bonding, identity theft, how to throw a hard slider (not that any of us will be trying that!), a new museum at the Hillel house, a "worm's eye" view of life in Nazi Germany, art in Africa, ancient monasteries of Mt. Athos, the Great Bolivian fever mystery and a report on the vision of the future of UF by the Chairman of the Board of Trustees. Where else could one go to get this variety of information? President-Elect Taylor has put together an equally impressive program for the spring.

I talk to a lot of people on the cusp of retirement who have never heard of RFUF. Somehow we are not getting the word out that this is a terrific learning experience as well as a chance to share a cup of coffee and swap stories with your peers. If you know of someone who has just retired from UF, tell them about us, or better yet, bring them to a meeting.

Duane Ellifritt

Programs Spring 2006

The following meetings are at **10:00 a.m.** at the **Harn Museum of Art.** (Doughnuts and Coffee at 9:30a.m.)

- January 4* **PARKER SMALL**, Professor Emeritus of Pathology & Immunology
"Flu—Not Just for the Birds"
- January 11* **SEYMOUR BLOCK**, UF Professor Emeritus
"Ben Franklin's Women"
- January 18* **GORDON HUBBELL**, Shark Researcher
"Sharks—The Real Story"
- January 25* **TIM WALTON**, UF Softball Coach
"Expectations for 2006"
- February 1* **RICK LIND**, Assistant Professor of Mechanical & Aerospace Engineering
"Biologically-Inspired Morphing for Micro Air Vehicles"
- February 8* **RAY BELLAMY**, Orthopedic Surgeon, FSU Faculty (part-time)
"Scientific Integrity in Question—The Battle for the Chiropractic School at FSU"
- February 15* **FRANK POLACK**, Professor Emeritus of Ophthalmology
"The Artificial Cornea"
- February 22* **THOMAS MULLIGAN**, Director of GRECC, Professor & Chair, UF Div. of Geriatrics
"Male Menopause"
- March 1* **BOB UHRIG**, Former UF Dean of Engineering
"Is There a Hybrid Auto in Your Future?"
- March 8* **MARK QUATHAMER**, WUFT Jazz Director
"Jazz on Classic 89"
- March 15* **GERTRUDE BLOCK**, UF Lecturer Emeritus
"Can Words Change the World?"
- March 22* **RAMESH SHRESTA**, Professor of Civil & Coastal Engineering
"Remote Sensing"
- March 29* **DALE CANELAS**, Director of UF Library
"Facilities for Faculty & Students at the New Library"

-
- April 5* **SPRING LUNCHEON, Paramount Hotel**
11:30 A.M. **WIN PHILLIPS**, UF Vice President for Research
"Biomedical Research in Florida and the Scripps Research Institute"

Luncheon reservation forms will be included in the spring newsletter

Medicare D



The state of Florida, Department of Management Services has determined that the prescription drug coverage offered by the State Employees' Group Health Insurance Program (State Health Program) is, on average, at least as good as the standard Medicare prescription drug coverage. As such, you can keep your State coverage and choose to join a Medicare prescription drug plan at a later time without penalty.

If you do decide to enroll in a Medicare prescription drug plan and drop your State Health Program, you should be aware that you will be dropping your hospital, medical and prescription drug coverage. **If you choose to drop your State Health Program coverage, you will NOT be able to enroll back in the State Health Program unless a special Open Enrollment period for non-enrolled State of Florida retirees is mandated by the Florida Legislature.**

For more information about this notice or your current prescription drug coverage, contact the People First Service Center at 1-866-663-4735.

Faculty Honors

Karen Bjorndal, Director of the Archie Carr Center for Sea Turtle Research has been named Distinguished Alumni Professor. Dr. Bjorndal was also named UF Teacher-Scholar of the Year in 2003.

Julie Levy, Professor of Veterinary Medicine has been named outstanding woman Veterinarian for 2005 by the National Association of Women Veterinarians.



Professors of Physics **Paul Avery** and **Peter Hirschfeld** and Professor of Chemistry **Frank Harris** were in 2005 named Fellows in the American Physical Society.

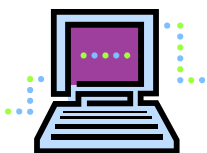
Professor **Sandra Chance** has received an award from the Scripps Howard Foundation as Journalism Teacher of the Year.

Professor **Mary Collins** was recently elected President of the Soil Science Society of America, becoming the first woman to lead the 5,700 member international organization.

Professor **Arthur Hubbard**, Department of Physics and Professor **Weihong Tan**, Department of Chemistry, have been elected fellows in the American Association for the Advancement of Sciences.

Dr. Terry Mills, Department of Sociology has been appointed to the National Council on Aging.

Dr. P.K. Nair, Distinguished Professor of Agroforestry, received the Scientific Achievement Award from the International Union of Forest Research Organizations.



Check out Our Website!
www.retiredfaculty.ufl.edu

UF Libraries



The UF Library has set a goal of \$1.2 billion to be raised in the UF financial campaign which begins next year. In assessing the Library's needs, we compared its position with a dozen other large public universities. These, listed in order of numbers of students, ranging from just over 31,000 to almost 50,000 students are Texas, Ohio State, Florida, Minnesota, Penn State, Wisconsin, Illinois, Michigan, UCLA, Indiana, Washington, and UC Berkeley.

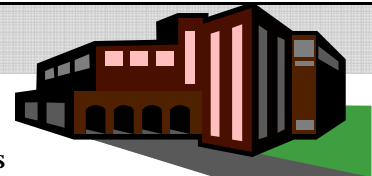
Although third in total enrollment, Florida ranks much lower in graduate school enrollment. Even though Florida ranks second in the number of PhD fields offered, it ranks sixth in the number of PhD's conferred. As to library

expenditures, it ranks last, for example:

<u>Library Category</u>	<u>UF Rank among top 12 Public Universities</u>
Library Expenditures	LAST
Library Materials	LAST
Volumes Held	LAST
Library Staff (Numbers)	LAST
Volumes per Student	LAST
Volumes per Ph.D. student	LAST
Library dollars per student	LAST

This is an example of the lack of wisdom of increasing total enrollments, a top priority of previous administrations, without the facilities or the increased revenues to support the larger numbers. The Library hopes the fund raising effort in the coming campaign will allow us to regain our rightful place among the premier state universities.

Changes on the Campus



The Levin College of Law now has an expanded **Lawton Chiles Legal Information Center**, accommodating newly created state-of-the-art classrooms as well as becoming the largest academic law library in the Southeast.

Library West will reopen next January with a 60,000 square foot addition, containing modern facilities for shelving and many graduate student and faculty work spaces to facilitate research and study groups.

The **new 250,000 square foot building** on the corner of North/South Drive and Mowry Road which is being constructed for scientific research in genetics and cancer will be completed this spring.

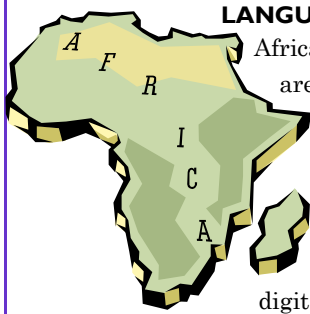
Expansion to McKethan Stadium began in July of this year. It will provide more space for office and locker rooms for baseball, as well as for volleyball, softball, and track.

Murphee Hall now has central air conditioning and heat!!! The window units are no more.

Space in the Hub, once used by the UF Bookstore is being renovated into a 24 hour internet café and study center. It is expected to open next summer.

A new building will be added to the historic core of the UF campus next summer. The building, named **Pugh Hall**, will stand between Newell and Dauer Halls and will house the new Bob Graham Center for Public Service, programs in the area of governmental studies will train students for public leadership and research.

Research at UF



LANGUAGE OF URBAN AFRICA

African countries claim 2,000 of the world's 6,000 languages. As part of the interdisciplinary area of urban studies, Dr. Fiona McLaughlin, Associate Professor of Linguistics, is conducting research to understand how language use is shaped by and in turn shapes the social and political arenas. Hybrid languages have arisen in urban African cities as a result of contact over many years between Africans and Europeans. "These new languages provide a unique opportunity to examine the nature of the human mind, especially in the way it creates language." The project will also involve the establishment of a small laboratory to create digital sound files for linguistic analysis.

AIDS

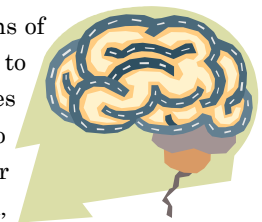
Dr. Maureen Goodenow is the director of research in the Department of Pathology, Immunology, and Laboratory Medicine and the first Stephany W. Holloway chaired professor. Dr. Goodenow who co-founded UF's AIDS Program reports that recent AIDS research has lowered the transmission rate of mother-to-child to less than 5% in the western countries. Dr. Goodenow discovered the genetic variations that regulate the transmission of the AIDS virus during pregnancy and childbirth. Her research also provides answers on why some strains of HIV resist treatment and which therapies are likely to work on a particular patient. Linking with other medical disciplines, new vaccine strategies will be uncovered.

OTHER WORLDS

With a grant from the W. M. Keck Foundation, Dr. Jian Ge, Chairman of the Astronomy Department, will lead a team of researchers to build and test a device called Exoplanet Tracker. Using this instrument which will allow changes in light waves to be detected, researchers plan to monitor 20,000 stars in order to identify 500 new planets as well as new planetary systems. Within the next three years, UF plans to begin a planet survey that could lead to the detection of Earth-like objects and possibly life on other planets.

NEW BRAIN CELLS

Researchers at the UF Brain Institute say they are able to identify the master cells in the brains of mice and grow them in large batches in a laboratory setting. If their discovery translates to human application, the break-through technique could lead to new treatments for such diseases as Parkinson's and Huntington's or even epilepsy. Although the adult brain continues to produce a limited number of brain cells, the cell culture technique would produce cells in far greater numbers than the body could produce on its own. If the person's own cells could be used, the procedure could be carried out without the need for immunosuppressant drugs.



AUTISM

Researchers in the College of Nursing have discovered that teaching fathers to work with their autistic children improved the child's verbal output by more than 50% in addition to the emotional value of getting the father involved and communicating with his child.

HEALTHY SPUDS



Professor Chad Hutchison, Department of Horticulture in IFAS has developed an even healthier potato than was reported last year. These new potatoes now contain only about 13 grams of carbohydrates compared with 19 grams of the same serving of Russet baking potatoes. These new spuds are a hot item in supermarkets, while researchers in IFAS are now promising a larger and tastier version next year.

Did You Know?

ALL THAT TRASH: In 2001, Americans generated 229.2 million tons of municipal solid waste of which more than 1/2 ended up in land fills.

COMPANIES//NATIONS: Wal-Mart has annual sales as large as the GDP of Belgium and almost twice as large as that of Poland and Turkey.

CAR COSTS: Cars are one of the most heavily subsidized perquisites since the Pyramids. Depending on what factors are considered, subsidies to automobiles vary from \$185 billion to \$1.5 trillion annually.

ETHICS/INFLATION: In 2004 only 13% of the top executives at large companies said that strong ethical values are the most important leadership trait for CEO's. No wonder the ratio of average CEO pay, now \$11.8 million, to average worker's pay, now \$27,460, is 430 to 1. If the minimum wage had been raised as much as CEO pay has risen, the lowest paid worker would not be earning \$5.15 an hour, but rather \$23.00 per hour.

GUNS: One third of the nation's adults keep firearms at home. The highest percentage, 63% is in Wyoming and the lowest, 5% is in the District of Columbia which has strict gun control laws.

IMMIGRATION: A record 415 people have died in the last year, trying to cross the border illegally from Mexico, partly due to the severe heat wave, coupled with tougher enforcement which caused smugglers into more treacherous terrains.

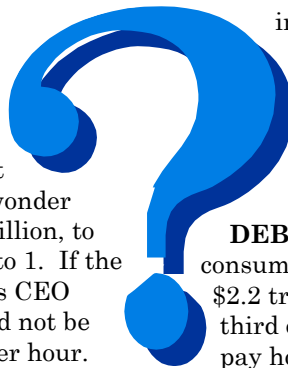
SINGLE FOLKS: We are living alone these days—about 1/4 of the U.S. households now consist of one person, a much higher proportion than “traditional” households which are comprised of a married couple and children. More than half are two or more person households that do not include married couples.

UF'S ADVANTAGES: UF is one of the largest and most comprehensive universities in the nation with over 48,000 students in 16 colleges and more than 150 research, service and educational centers and institutes, offering 100 undergraduate degree programs and over 200 graduate and 30 combined degree program. The 2,000 acre campus provides housing for about 7,500 undergraduates and 2,000 graduate students and families.

DEBT PILES UP: Over the last five years, consumer debt has almost doubled, now reaching \$2.2 trillion and still growing. And amazingly, one third of the cardholders are using credit cards to pay household expenses.

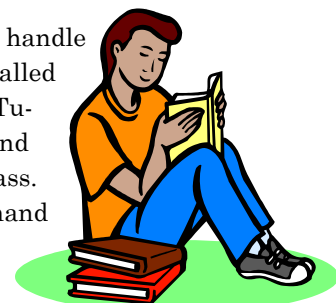
THE ORANGE STATE: Florida's first orange tree is believed to have been planted by Ponce de Leon in the mid 1500's near St. Augustine. The state now has 98 million trees which produce annually 292 million boxes or about 27,000 pounds of oranges. Most of our orange crop is picked by hand.

WILL WE EVER LEARN: Currently, the countries of our world are spending \$2.2 billion a day on weapons!



TUTORINGZONE

Another example of the fact that UF may have outgrown its capacity to handle the undergraduate numbers of students is the growth of a company called TutoringZone. Started by two graduates of UF's College of Business, TutoringZone offers weekly review sessions, mass reviews before tests and outlines of lectures of the College of Business classes, all for \$20 per class. One student said, "Taking a class in the business college goes hand-in-hand with taking sessions in TutoringZone. They can explain something in two seconds that would take my professor an entire period." OUCH!!!!



In Memoriam

*We regret to announce the departure from this life of our retired colleagues.
We extend our condolences to their families & friends.*

Thomas Bailey
Physics & Electrical
Engineering

Rudolph H. Blythe
Pharmacy

James Button
Political Science

Chesley B. Hall
Horticulture

James Haskins
English

Hugh Hill
Obstetrics & Gynecology

Chat Yin Ho
Mathematics

Hal G. Lewis
Education

John Nattress
Industrial Engineering

Samuel Proctor
History

Vincent Schroder
Agronomy

Irene Thompson
English and Women's
Studies

Lucia Yu
Accounting

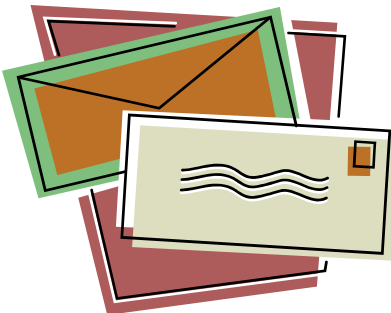
In the fall of 2005, RFUF friend and loyal member, Lucia Yu died suddenly of a blood infection. Lucia was a Professor & Associate Dean of the School of Accounting and upon retirement, opened a tax accounting service. She served RFUF for three years as our Treasurer.

We will miss her; we appreciate her years of service to the Retired Faculty of the University of Florida.

MEMBERSHIP

The retired faculty organization, RFUF is always glad to welcome new members. All retired faculty of the University of Florida, e.g. faculty, lecturers, adjunct faculty, courtesy faculty, or UF administrators, e.g. director, associate director, assistant director or equivalent of department, center, college or other unit, who has served a minimum of 10 years and who is 55 years of age or older are eligible for full membership. Retired faculty of other institutions of higher learning who meet the same criteria are eligible for associate membership. In addition, retired non-faculty employees of UF who meet the same standards of age and length of service and spouses of deceased RFUF members and former UF faculty may join as associate members. Using the form on the reverse page, send nominations and dues to RFUF, P.O. Box 15544, Gainesville, FL 32604-1554.

For an annual dues of \$10, members are able to participate in weekly meetings at the Harn Museum of Art which include a coffee social time followed by lectures and discussions on important, current issues. —See you on January 4th!



Please look at the mailing label on your newsletter. We use the "address label" to advise our members whether or not their annual dues are up to date. Please check the mailing label of this newsletter:

Date on Mailing Label

09/30/04

09/30/05

09/30/06 or later

Take This Action

Pay \$20 (2) years dues

Pay \$10 (1) years dues

Your dues are paid up to date or ahead

Those of you who are in arrears, please use the form on the last page of this newsletter to submit your dues.



RFUF

Retired Faculty of the University of Florida, Inc.
PO Box 15544, University Station
Gainesville, FL 32604-1554
Address service requested

PRESORTED STANDARD
U.S. POSTAGE
Paid
Permit No. 1
GAINESVILLE, FL

**Please send a
check with your
dues to: RFUF,
PO Box 15544
Gainesville, FL
32604-1554**

RFUF Annual Dues	\$10.00
Amount Paid \$ _____	
Name: _____	
Address: _____	
_____ Phone: _____	
E-mail Address: _____	
Retired from _____ Dept. _____	