



RFUF

RETIRED FACULTY OF THE UNIVERSITY OF FLORIDA, INC.

September 2006

Volume 31, Number 1

Board of Directors 2006-2007

Charles Taylor
PRESIDENT

Raymond Andrew
PRESIDENT ELECT

James R. Saucerman
SECRETARY

William Van Dyke, Jr.
TREASURER

Duane S. Ellifritt
PAST PRESIDENT

Joseph Amdur
Ray Boduc

Robert F. Lanzillotti

Robert A. Levitt

C. Vernon Shaffer

Ann Smith
DIRECTORS

Robert A. Ramey
MEMBERSHIP CHAIR

Madelyn M. Lockhart
NEWSLETTER EDITOR

Audrey Clark
HOSPITALITY CHAIR

Fall Luncheon

11:30 a.m.

October 4, 2006

Paramount Plaza Hotel

President's Message

Welcome to a new academic year at the University of Florida. It seems that September comes around quicker each year, this year especially. Soon there will be thousands of young people returning to our campus to socialize, enjoy campus life, and perhaps even study. This is also the time for the RFUF to launch an exciting new season.

The Fall Luncheon is scheduled at 11:30 a.m. on October 4 at the Paramount Resort. The weekly Wednesday morning meetings will be in the Harn Museum of Art – Coffee and Doughnuts: 9:30 to 10:00 a.m. – Meeting 10:00 to 11:00 a.m. A schedule of speakers is included in this Newsletter.

The Chandler Auditorium of the Harn Museum of Art has been a very friendly meeting place for our group and we have reserved it Wednesday mornings for both the Fall and Spring Semesters. Program Chairman-President Elect Ray Andrew has booked an outstanding group of speakers. We are always reminded of our good fortune to be able to draw such talented speakers from the rich diversity of the University faculty and from the city of Gainesville.

Our speakers, though held to a brief time limit, have consistently been extremely interesting and enlightening. The attendance at our weekly meetings of 50-60 is very good but we would like to share our great programs with many more. So, if you have UF Faculty friends who have retired (recently or not so recently), please invite them to upcoming meetings. Others who have served on faculties of other universities are also welcome to join RFUF as Associate Members and enjoy the same rights and privileges as Members.

I look forward to seeing you all on a regular basis starting on October 4

Chuck Taylor

Programs Fall 2006

The following meetings are at **10:00 a.m.** at the **Harn Museum of Art.** (Coffee at 9:30a.m.)

- October 11* **DR. BARBARA O. KORNER**, Professor and Associate Dean, College of Fine Arts
"Environmental Design Lighting"
- October 18* **ROBERT JERRY**, Dean, Fredric G. Levin College of Law
*"The Wonderful World of Insurance: Risk, Life, Death, Hurricanes, The Kitchen Sink
and Much More"*
- October 25* **DR. CATHERINE EMIHOVICH**, Dean, College of Education
"Engaged Scholarship Research for the Public Good"
- November 1* **DR. MICHAEL MARTINEZ**, Associate Professor, Department of Political Science
"Election Around the Corner"
- November 8* **HANK CONNER**, Associate Professor Emeritus, University of Florida
"Fast Forward and Rewind: Four Decades in Gainesville Broadcasting"
- November 15* **DR. KENNETH WALD**, Professor, Department of Political Science
"Election Post-Mortem"
- November 29* **DR. WILLIAM VAN DYKE, JR.**, Retired Engineer, Departments of Defense and
Energy and Professor of Engineering, University of Maryland, George Washington
University and Johns Hopkins University
"Robert Oppenheimer and Band of Brothers In Development of the Atomic Bomb"
- December 6* **DR. ED GILMAN**, Professor, Environmental Horticulture
"Pruning Trees to Resist Hurricanes"
- December 13* **DR. WILLIAM T. DRIEBE**, Professor and Interim Chair, Department of
Ophthalmology
"Corneal Infections"
-
- October 4*
11:30am **FALL LUNCHEON, Paramount Plaza Hotel and Suites**
Speaker: Mary Wise, Head Volleyball Coach, University of Florida
"Building Champions"
-

Awards, Appointments, and Recognition



★ President Bernie Machen will serve as one of 15 presidents and chancellors of universities in the FBI's new National Society Higher Education Board

★ Physics Professor Arthur Hebard and Chemistry Professor Weihong Tan have been named Fellows in the American Advancement of Science

★ Dr. Colin Burrows, Chairman of the Department of Small Animal Sciences and Chief of Staff of the Small Animal Hospital, College of Veterinary Medicine has received the 2006 World Small Animal Medical Association/Waltham International Award for Services to the Profession.

★ Dr. Sandra Wilson, Associate Professor of Environmental and Horticultural Sciences received the Teacher/Fellow Award from the North American Colleges and Teachers of Agriculture.

★ E.T York, Chancellor Emeritus of Florida's University System received the Service to America and World Agriculture Award from the National Association of Agricultural Agents.

★ A new book, *Changing the World: True Stories of Women Engineers* profiles, among others, UF's Provost Janie Fouke for her research on asthma, Prof. Wendy Graham for her research on the ways to reduce nutrient pollution in ground water, Prof. Carol Lehtola for her studies on renovations, i.e., installing protective rollover structures, and Prof. Dorata Hamen for her efforts to help farmers around the world manage water problems.

★ University of Florida alumnus, Robert Grubbs, (BS,MS'65) has won the Nobel Prize for the development of powerful catalysts that opened the door for metathesis to become a tool for new drugs and better materials. He follows Alumnus Marshall Nirenberg (BS,MS'52) who previously won the Nobel Prize for his work in deciphering the genetic code.

★ Carl Van Ness who is the curator of archives and manuscripts in the Department of Special and Area Studies Collections in the George A. Smathers Libraries has been named the University of Florida official historian. He succeeds Samuel Proctor who was the first named historian when the position was created in the 1950's and held it until his death in 2005. Van Ness has co-authored the book *Honoring the Past, Shaping the Future* which describes UF's history from 1853 to 2003



The World of SubjuGator and NaviGator

Our engineering students have been busy operating in the world of robots. SubjuGator, a 30 pound robotic submarine designed by 8 UF students in Electrical and Computer Engineering placed first in a national competition of student built robotic submarines.

NaviGator, a robotic car designed by a team of professors, technicians and doctoral students made it through several challenges from 118 schools to get to the main event. The UF entry in the first national robot car race two years ago came in eighth. The NaviGator traveled just 6/10 the of a mile. However, this year's entries, including the 2005 NaviGator had much improved electronics. They were ready for the 113 mile course across the desert on the Nevada- California line. At day's end, after a valiant try, NaviGator had traveled 23 miles and thus placed 18th among the 23 finalists. Much of the research involved in the NaviGator can be used by the U.S. Air Force. NaviGator was a worthy ambassador for UF's College of Engineering and a valuable research experience for our graduate students.

Research at UF: The Citrus Industry



University of Florida professors and graduate students are mobilizing to defend Florida's \$9.3 billion citrus industry from canker citrus and citrus greening. The 2004 hurricanes spread citrus canker to 80,000 acres of commercial land. In 2005, Hurricane Wilma spread the disease even farther, 168,000--220,000 acres could be affected. Thus, eradication of groves is no longer a feasible strategy. The research team at Lake Alfred, led by Professor Jim Graham has developed a modified bacteria which will help researchers learn more about the canker bacteria, hopefully leading to more effective quarantine practices. In addition, Gloria Moore and Fred Gmitter, Professors of Horticulture Sciences are working to determine if the citrus tree itself, through gene transfer, can provide canker resistance.

Citrus greening, a disease transmitted by an insect, the Asian citrus psyllid, found throughout Florida is an even bigger problem than citrus canker. To attack these insects, natural enemies of the psyllid were imported from Taiwan and Thailand. Although the early results of this research are promising, attacking the problem will also require effective management practices, including early detection and testing of pesticides

Economics of Growth



Florida's economy is booming---right? 1000 new residents every day; housing prices up 72% over the last ten years; revenues from the documentary stamp tax doubled over the last four years; the state is awash in tax revenues. Not so fast, say David Denslow, UF Professor of Economics and Carol Weissert, LeRoy Collins Eminent Scholar at FSU. "Tough Choices" by these authors, examines the impact of Florida's 5 million residents over 55, including 3 million retirees---10% of the nation's total. Legislators are not convinced as yet, but the time will come, sooner rather than later when the crunch hits and the LeRoy Collins Institute recommendations will have to be taken seriously. These include preparing interim recommendations to the new governor and legislature in 2007 . Such considerations as:

1. modification of the class size limits to meet other school needs, such as teachers salaries,
2. take a long look at the allocations of Medicaid,
3. improve service levels in areas such as higher education which has strong impacts on the state's economic development efforts,
4. adjust taxes and fees, such as the sales, gas and property tax levels, and finally
5. refrain from giving tax breaks to retirees.

Did you know?

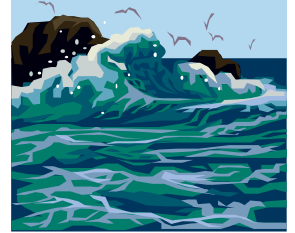


IMMIGRANTS In the 1890's an eccentric Shakespeare enthusiast, Eugene Schieffelin, released 100 starlings into Central Park in NYC in order to introduce the "New World" to the birds mentioned in the bard's work. Now, there are an estimated 200 million starlings in America, making them our most prolific immigrants.

OUTSOURCING Have you spoken to anyone in Bombay today? If not, you probably will tomorrow, since 16% of the call centers are overseas. In addition, companies are outsourcing 32% of product development, 30% of administrative activities and 22% of information technology.

HIGH WINDS The 2005 Atlantic hurricane season was the busiest on record, according to the National Oceanic and Atmospheric Administration. There were 26 named storms, of which 13 were hurricanes, seven major ones. This surpassed the previous record of 21 storms in 1933. According to NOAA, the Atlantic Basin is in an active phase which will enhance hurricane activity in the future.

GARBAGE When you swim in the ocean, remember it is full of garbage. Last year, an environmental group removed 7.6 million pounds of garbage from the oceans bordering 88 countries.



HIV/AIDS More than 40 million people world wide have HIV/AIDS. Every day 8000 people die of AIDS related diseases. UF is a leader in AIDS research, but more is needed especially for patients living in poverty in the developing world.



YOUR YACHT Do you have a yacht or other boat you aren't using? You can now donate it to UF to be sold, the money to be used for scholarships or professorships

HEALTH CARE COSTS In employer provided health care programs, the illnesses of 4% of the covered families account for 49% of the costs, i.e. \$10,000 per year per family.

WHERE IS IT? What are we teaching our children? A recent survey of those aged 18 to 24 showed 64% could not locate Iraq on a map. And even worse, 50% could not locate New York State.

WIND FARMS The Philippines have opened the first Wind Farm in the Southeast, bringing them closer to energy independence. It is estimated that they can save almost \$3 billion in fuel (energy) imports over the next 10 years..

RAT CAPS Until the 1960's (do you remember) freshmen were required to wear small caps every day except Sunday. Although President Steven O'Connell attempted to promote the tradition, the students rejected it in the 1970's.



GAINESVILLE WON Gainesville was the highest bidder for the University of Florida in 1906, one hundred years ago. Lake City was a strong contender, but Gainesville offered 500 acres of land, \$40,000 in cash and free water services.

ALACHUA COUNTY'S FIRST The first Catholic Mission Church was established in 1606 just 8 miles northeast of Gainesville, before the Pilgrims landed at Plymouth Rock. Four centuries ago this year, the church and educational center was founded and named San Francisco de Potano after the native tribe of Timucua speakers who inhabited the region today known as Alachua County.



EGLIN AIR FORCE BASE. The Department of Defense is making natural resource management plans for its military bases around the country. Eglin Air Force Base in the panhandle of Florida is noted as one of the best in the nation for the preservation of the environment for birds and other animals.

OUR HIGH SCHOOLS There was a national survey of high schools, measuring the percentage of the total enrollment of the school who scored well on the SAT. Eastside High School was sixth on the list of 100 schools across the nation. Florida had 18 high schools that made this list.



Check out Our Website!
www.retiredfaculty.ufl.edu

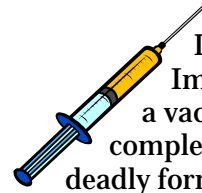
THE GREENING OF UF



UF's sustainability initiative dates back to 1997 when a group of students and faculty volunteers founded an advisory group called Greening UF. Later, the UF Sustainability Task Force was created, resulting

in a list of recommendations., many of which were instituted. About half of the nation's colleges and universities have launched similar programs, but UF has gone further than most in a variety of ways. For example, UF has 13 environmentally friendly "green" buildings: that is, building constructed with renewable materials to high energy standards. Saving electricity by adjusting the temperature in classrooms and dormitories and using biofuels whenever possible are other ways UF is environmentally friendly. In addition, UF is the only university to receive the Audubon Society's "Certified Audubon Cooperative Sanctuary" award for wildlife management and resource conservation.

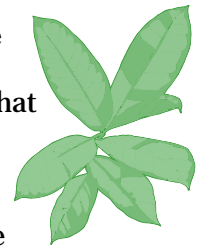
MELANOMA



Dr. Howard Johnson, professor Immunology, IFAS, had developed a vaccine which provides almost complete protection from melanoma, a deadly form of skin cancer. Once the vaccine is licensed, human clinical trials can begin.

MIGRATION

We know that during a period of sudden global warming, 55 million years ago, mammals migrated across northern land bridges. Now, as a result of the research of UF Paleontologist, Dr. Jonathan Block, we know that plants from more tropical environments migrated too. In addition, we can surmise that lush tropical forests might have played a role in the evolution of primates' climbing skills.



CHANGES ON THE UF CAMPUS

1. Shands Health Care and UF's Health Science Center plans to construct a 200 bed cancer hospital on the site of the University Center Hotel on Archer Road.
2. The Bob Graham Center for Public Service opened on the main campus this summer. Graham intends to lecture and occasionally teach a course at the center.
3. UF has now spread its wings even further. The UF Center for International Studies in Beijing, China, opened last year and is going strong.
4. The Museum of Natural History is adding more than 30 exotic species and hybrids to its Butterfly Rain Forest Exhibit.
5. The Levin College of Law, to meet a demand of lawyers trained in the international arena, is adding a new graduate program, i.e. Master of Law in International Taxation.
6. The housing department is installing wireless computer networks in all resident hall common areas.



7. Research Awards rose by \$494 million last year. Two organizations, the National Institute of Health and the National Science Fund increased awards to UF by \$30.9 million more than the previous year.



8. The new Wetlands Ecological Research Aviary, a 13,000 square foot outdoor aviary, one the nation's largest, has been located just east of Gainesville. It will house 160 white ibises. UF scientists in Wildlife Ecology and Conservation will conduct a 5 year study to learn how tiny amounts of mercury can affect wildlife, especially wading birds in the Florida Everglades.

Harn Museum Spring Exhibition

The Harn Museum is currently seeking adequate funding in order to present a unique and extensive exhibition of modern and contemporary art in Ethiopia from the 1940's to the present. The collection, organized by Museum Director Rebecca Nagy and North Carolina Central University professor, Achamyelch Debela will present 61 works by 23 artists along with additional media and contextual materials. An accompanying catalogue will explore the role of government support of artists as a strategy for the modernization of Ethiopia. In particular, this exhibition is the first to examine the influence of the School of Fine Arts in Addis Ababa, the artists who were and are active and the political and social upheavals of 20th century Ethiopia. In the spring of 2007, the Harn will host the 14th Triennial Symposium of the Arts Council of the African Studies Association as well as other educational programs in partnership with U.F.'s Center for African Studies and the School of Art and Art History. After May, 2007, the exhibit will travel to other university museums in the U.S.

In Memoriam

*We regret to announce the departure from this life of our retired colleagues.
We extend our condolences to their families & friends.*

Henry Aldrich
Microbiology and Cell Science

Giuseppe Basile
Electrical Engineering

William G. Blue
Soil Science

Edward E. Carroll
Nuclear Science

James Eades
Geology

John Wilson Flowers
Physics

James Longstreth
Education

Ralph Maurer
Psychiatry

Darrell E. McCloud
Agronomy

Cade Moscovici
Pathology

Reid Poole
Music

Robert Primack
Education

John E. Reynolds
Food and Resource Economics

James Wattenburger
Education

J.B. White
Agronomy

Abbas Awl Zamen
Engineering

MEMBERSHIP

The University of Florida Foundation's listing of UF retired faculty and administrators shows that 500 of us are living in the Gainesville area. We'd like all to join the current 200 plus members of RFUF. Retired faculty and administrators 55 years and older who have at least 10 years of service in a department or center are eligible to join, as are like retired members from other universities. Members are challenged to invite those who are not members to join us. We will enjoy their participation.

For annual dues of only \$10, our members can join us on Wednesdays of each week from 9:30 to 11:00 at the Harn Museum where parking is free for our members. Our coffee and doughnut social time, our informative programs and our open question and answer sessions all keep us involved in the university and with each other. RFUF adds to the pleasure of retiring in Gainesville. Use the form on the reverse page for new members.

Our first meeting is a luncheon on Oct 4th at the Paramount Plaza Hotel. Our speaker is Mary Wise, Head Volleyball Coach at UF. Mary is a great motivational speaker who will lead us into a new year of splendid programs. Send your reservation for the luncheon using the form on the reverse page.

We use the "address label" to advise our members whether or not their annual dues are up to date.

Date on Mailing Label

09/30/06

09.30/07 or later

Take this Action

Pay \$10 (1) years dues

Your dues are paid up or ahead

Please use the form on the reverse page of this newsletter to submit your dues.





RFUF

Retired Faculty of the University of Florida, Inc.
PO Box 15544, University Station
Gainesville, FL 32604-1554
Address service requested

PRESORTED STANDARD
U.S. POSTAGE
Paid
Permit No. 1
GAINESVILLE, FL

RFUF Fall Luncheon

October 4, 2006

Name: _____

Address: _____

E-mail Address: _____

No. of Tickets @ \$14.00 _____ Deadline: **September 27**

**Please send a
check with your
dues to: RFUF,
PO Box 15544
Gainesville, FL
32604-1554**

RFUF Annual Dues

\$10.00

(October 1, 2006–September 30, 2007)

Amount Paid \$ _____

Name: _____

Address: _____

Phone: _____

E-mail Address: _____

Retired from _____ Dept. _____

